

1066 MODEL FLYING CLUB.

CLUB RULES FOR THE FLYING OF MODEL

AIRCRAFT ON THE BULVERHYTHE RECREATION GROUND.

Revised Version 2017

FLYING FIELD ETIQUETTE

For everybody's safety, members should follow this simple 5 step guide to safe model operation while at the field (please refer to map [Figure 1] and Print a copy for use at the field).

- 1 All Models should be carried or manually pushed from the pits to the designated takeoff and landing area, and vice versa.
- 2 Modelers should only use the takeoff/ landing area after seeking approval from members currently flying.
- 3 All members currently flying should stand in the designated standing area, to maintain communication between pilots.
- 4 Pilots should call out all intentions, including takeoffs, landings, and low passes. Pilots should also seek approval from members currently flying before retrieving their model. **35 MHz** transmitters should not be taken in to the field when collecting your model.
- 5 Models must only be flown in the designated flying area. If more than one model is in the air at the same time, they should broadly follow a circuit as dictated by the takeoff / landing direction, unless otherwise agreed, to reduce the risk of midair collisions.

6 REMEMBER! EVERYONE IS THEIR OWN SAFETY OFFICER.

1. These rules are specific to the area designated for model flying [see Figure 1] and are not intended to replace the BMFA Rules and Guidelines outlined in the BMFA Members Handbook.
2. All members of 1066 MODEL FLYING CLUB must also be members of the BMFA and should familiarise themselves with the contents of the BMFA Members Handbook. Members should be aware that the BMFA insurance is dependent upon the BMFA Rules and Guidelines being adhered to, in the air and on the ground.
3. Members must be aware that there is no alternative to this agreement and the following rules must be complied with.

4. The 1066 Model Flying Club are the Licensees for Model Flying at this site, and are the body responsible for negotiating the rules governing this site with Hastings Council, therefore, any communications concerning the use of this site should be addressed to a committee member of 1066 Model Flying Club and NOT directly to Hastings Council.
5. Flying is permitted during the following times:
09.00 to 21.00 or Dusk (whichever is sooner).
6. All wheeled models including electric must be restrained during startup/ battery connection while in pits area
7. Members must watch out for other users of the site such as dog walkers, children etc., give them plenty of room by flying in another part of the flying zone until they are well clear.
8. Tombstones must be used for transmitters using the 35Mhz frequency band and should display the frequency they are using. 2.4Ghz transmitters do not require a tombstone.
9. On arrival at the site members are expected to establish a pit line with-in the Pits Area as indicated on the site map. This Pit line is to be parallel to line X-Y and at least 5 meters in front of the tree line to leave plenty room for walkers to pass by. Please see attached map below (Figure 1). **MODELERS MUST NOT FLY IN THE DEAD AIR.**

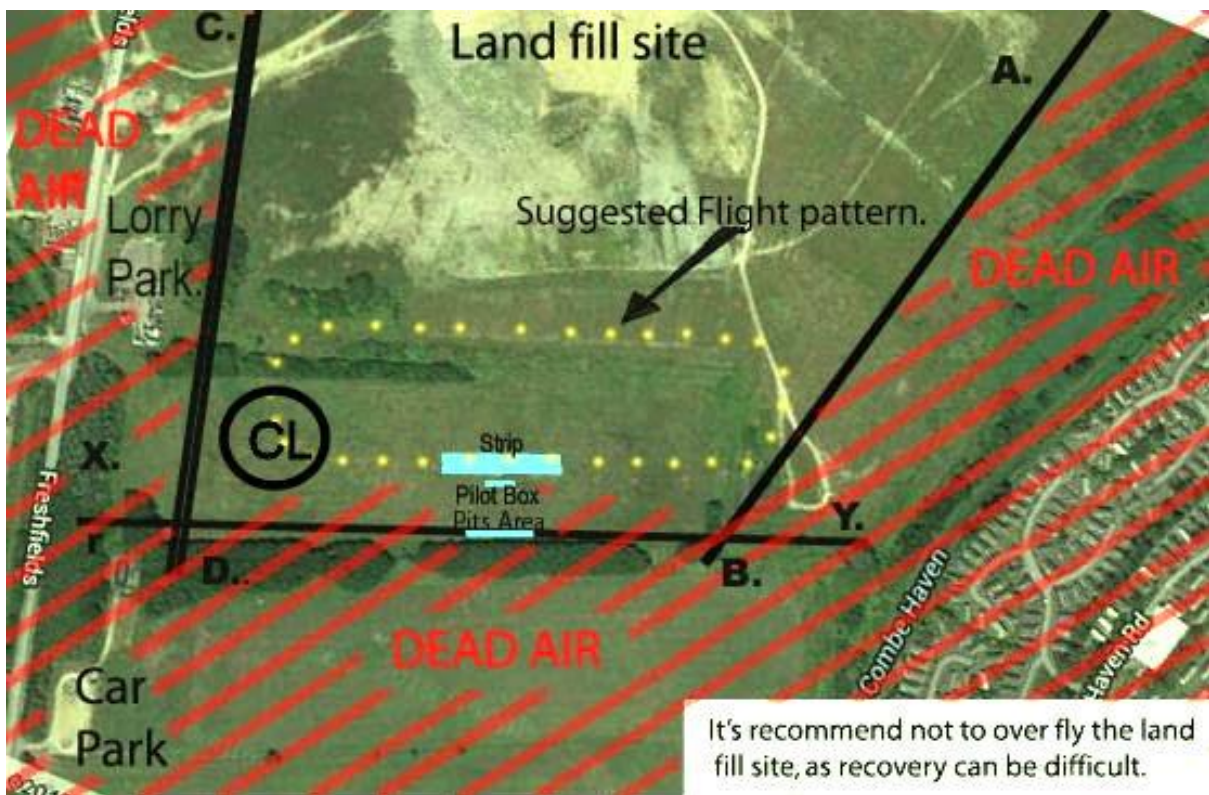


Figure 1

10. Control-line models will be flown on the far western side of the site near to the area marked CL on the map.

11. **After starting the engine / Connecting Battery power to Motor.** The model must be carried or pushed out, (NOT Taxied), to a Safe Position on the take-off area (this will be ahead of the pilot standing area). If other members are already flying, you must ask their permission before going in to the take-off area. No model shall be permitted to take off directly from the pits or pilots standing area. Take-off will generally be into wind but not in the direction of any persons or the pits area and pilots standing area. Whilst flying model should not over fly the pit area.
12. **For safety reasons**, while members are flying they should stand in **The Pilots Standing Area** [see figure 1] and remain within ear-shot of each other, to maintain communication between pilots.
13. When landing, shout 'LANDING' such that all other flyers can make provision to allow an unobstructed approach to the landing area. Landings should be made and the model brought to rest at a safe distance from the pits and pilots standing area. Taxiing is only permitted on the takeoff/ Landing area and beyond. Taxiing back to the pits and pilot standing area is dangerous and is not permitted.
14. All models are expected to be fully airworthy. If in doubt members should seek advice from an experienced member or a committee member. If the model is not airworthy it will invalidate your BMFA insurance.
15. To avoid the possibility of midair collisions a maximum number of models to be flown at any one time, will be restricted. No more than SIX fixed wing aircraft and SIX multi rotor may be flown at any one time.

Rotary Wing Aircraft

16. Amicable arrangement for helicopters/multi rotors should be made if both disciplines are in use at the same time. For safety reasons, the Helicopter/Drones flyer must be within ear shot of the Fixed Wing Flight Line.
17. Members wishing to fly drones designed for drone racing will be allowed to fly them at the west end of the field (see map- area circled CL), at a height of no greater than 9 meters (30ft), to avoid conflict with other flyers.

Transmitters

18. In Keeping with BMFA guidelines set out in the Members hand book, 35Mhz transmitters are not to be taken out in to the Flying field when other models are flying.
19. 2.4 Gig Hz transmitters use line of sight transmission. Never walk in front of a 2.4 Gig Hz radio when a pilot is Flying. (Always pass behind and then out to the sides before going forward).
20. The following types of models are registered with the BMFA for use on our flying site:
 - 20.1. Control Line
 - 20.2. Silent Flight

- 20.3. RC Fixed Wing
- 20.4. RC Helicopter
- 20.5. Trial Lessons Fixed Wing
- 20.6. Multi Rotors
- 20.7. Autonomous Flight

21. The following models are not permitted to fly on this site:

- 21.1. Jet turbine models of any kind.
- 21.2. Internal Combustion engined ducted fan models.
- 21.3. All models over 7Kg

22. Maximum noise level.

No model that gives a noise level measurement at 7 meters above 82db (A) will be allowed.

The club will periodically visit the site with a noise meter to check that the club is compliant with the HBC license conditions. Any model not complying with this test will not be allowed to fly the model, until the model complies with this reading.

FPV and Autonomous Flight

23. The flying of FPV models will be allowed provided they comply with the latest BMFA guidelines.

- 23.1. The models should not exceed 1.8kg for an airplane and 2.5kg for a rotor craft, including batteries or fuel.
- 23.2. The person piloting the aircraft is accompanied by a competent observer, who must maintain visual contact with the aircraft
- 23.3. The flight path must be within the bounds of the flyable airspace as defined in paragraph 9.

24. Autonomous flight can only be allowed when no other aircraft are in the air and is with in the airspace as defined in paragraph 9.

New Members

25. All new members to the Club no matter what their experience or flying ability are to be assessed by either a Committee member, Club Instructor or Examiner before they can fly unsupervised.

26. Junior members visiting the site must be supervised by a parent or guardian who will be accountable for that junior member's safety and conduct throughout the duration of their use of the site. It is not permitted or satisfactory to leave junior members under the supervision of Club members who happen to be using the site at the time.

27. Non-members cannot Fly at the field unless under tuition from a Club instructor as defined in the BMFA Handbook.

28. Members are not permitted to bring a Guest to fly at this site. However, the committee reserve the right to invite members from other clubs for events such as a fun fly on the basis that the visiting members are granted a temporary membership of the club for a period not greater than 3 days

Site Tidiness

29. It is essential that all litter is removed from the site at the end of a flying session, especially fragments of damaged models, broken props, bits of covering etc., must be collected and disposed of responsibly.

The Committees right to Amend the rules

These rules are subject to amendment at the discretion of the committee, for reasons of safety or new government legislation and will be formally added to the rules at the next AGM.